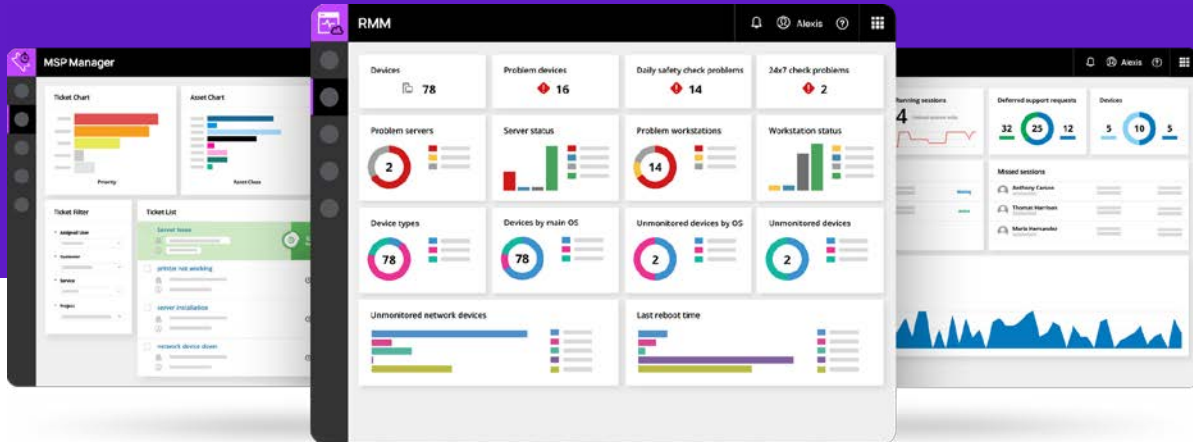


# Unlocking your IT possibilities

N-able N-sight RMM empowers services providers not only for today, but tomorrow.



Curated and designed to be a purpose-built platform for hard-working technology professionals, N-able™ RMM, Take Control, and MSP Manager combine to provide the complete, end-to-end solution that delivers superior functionality, flexibility, and scalability for MSPs that need to monitor more, automate more, and earn more.

N-able N-sight™ RMM allows MSPs to consistently deliver world-class automation and value to their business and clients through our innovative engineering teams, secure-by-design approach, and support resources that far surpass what other platforms offer.



Bundled software solutions



Fully Integrated



Unsurpassed pre/post-sales support

Here's how N-sight RMM\* unlocks your potential with everything your MSP needs for today and tomorrow:

## Robust RMM

- Monitor all your devices from one dashboard
- Automate routine tasks with no scripting experience required
- Onboard new customers and devices quickly
- Quickly identify issues with monitoring dashboards
- Analyze network traffic to spot bottlenecks
- 100% cloud based with automatic updates

## Fast access and support

- Secure end-to-end remote connections with all major devices
- Faster file transfers
- Eight second connections to Windows®, Mac®, and Linux® devices
- 4K+ resolution, multimonitor, and 24-bit true color support

## Professional ticketing and billing

- Maintain clear lines of communication with clients
- Capture all billable time
- Create detailed invoices
- Gain insight from tactical and technical reports



# N-able N-sight RMM gives you more

Don't settle for a starter platform—get the complete IT solution

	N-able N-sight RMM	Atera Growth Platform	Syncro MSP Platform	NinjaOne RMM
Monitoring	●	◐	◐	◐
Automation	●	◐	◐	●
Patch Management	●	◐	◐	◐
Network Device Discovery & Monitoring	●	◐	○	●
PSA	●	○	○	◐
Remote Support	●	◐	◐	◐

Legend ● included ◐ partially included ○ not available

Information is accurate at the time it is published (January 2022)

## THE EDGE YOU WON'T FIND ANYWHERE ELSE

Whether you're new to the industry or an experienced tech professional, we are here for you. We aim to make the transition from starting out to effectively delivering world-class managed services as seamless as possible. With our bundle of solutions and third-party integrations, you can address your customer goals and needs, and capture every billable dollar using a managed services model.

No one is better suited to choose the best partner for your business and clients than you—and N-sight RMM helps make the choice that much easier.

N-able partners can take advantage of much more than just our software, including the following benefits:

### MSP Institute:

World-class product and business training at your fingertips.

### Automation Cookbook:

Access to over 400 automation policies, custom monitoring, and scripts to help you attain more efficacy and efficiency for your business.

### Head Nerds:

Advocates, educators, and trusted experts and guides who help ensure partner successes with their knowledge.

### MarketBuilder:

Customizable, ready-made content tailored specifically for IT professionals to help you pitch your services with ease.

### Opportunities to engage:

Live boot camps, office hours, live demos, eBooks, and an in-depth resource library to offer additional support.



Contact an Account Manager for more information.  
1.800.800.0014 • www.connection.com/N-able