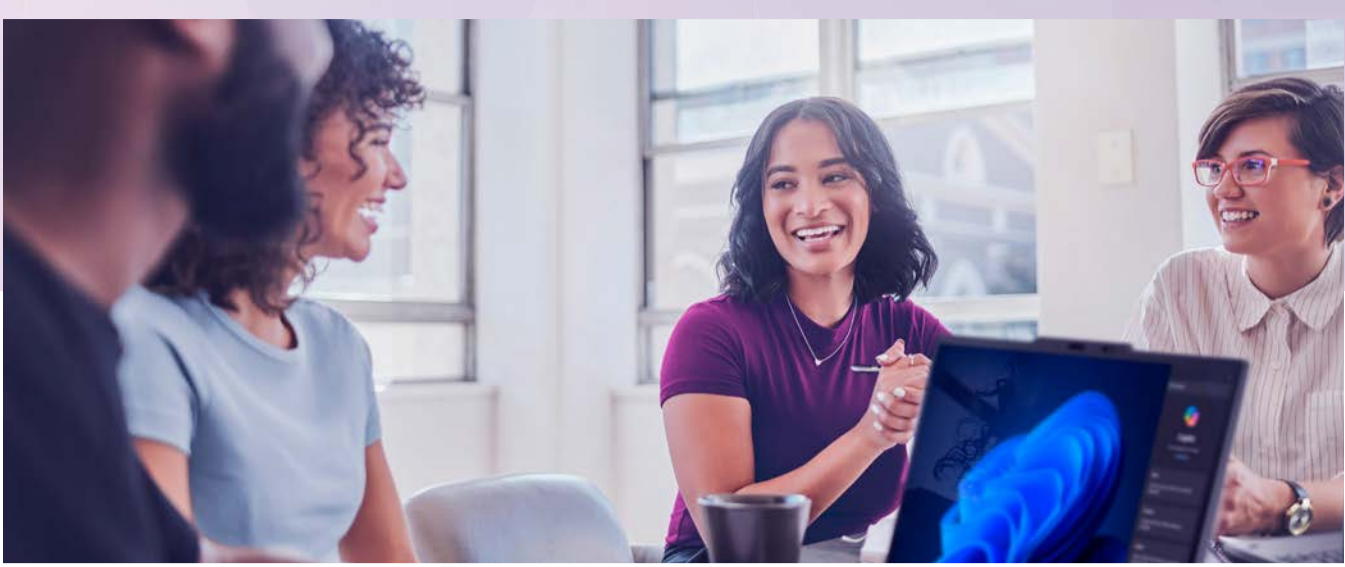


# Evolve! Lead your organization from Windows 10 to Windows 11 Pro

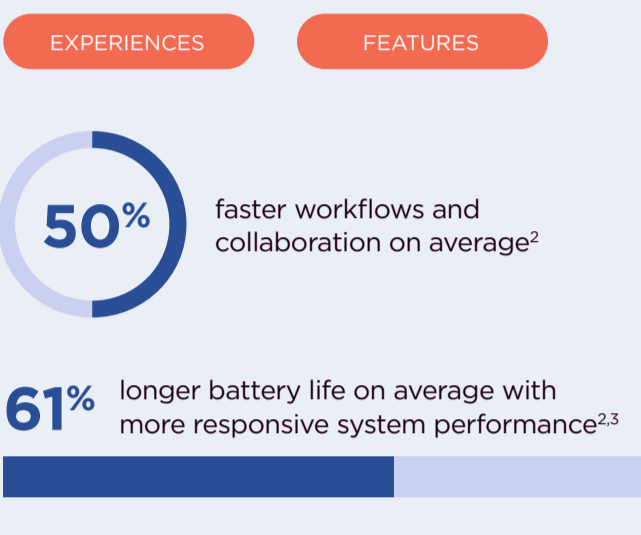


**The Windows 10 support deadline is October 14, 2025.** Upgrade now to be future-ready and get the advantages of improved user experience, new productivity enhancements, and security innovations — all backed by Copilot\* in Windows.

**Hover on the hotspots** to discover next-level features and hear from your peers about their migration experiences.

“Forward-looking companies know a PC refresh is critical to their continued success and recognize the value of making it happen well ahead of the planned Windows 10 EOS.”  
**IDC<sup>1</sup>**

## Productivity and EX Supercharge insights and efficiency



Optimize employee experience, boost productivity, and be AI-ready with powerful performance and new features that improve organization, efficiency, accessibility, and satisfaction.

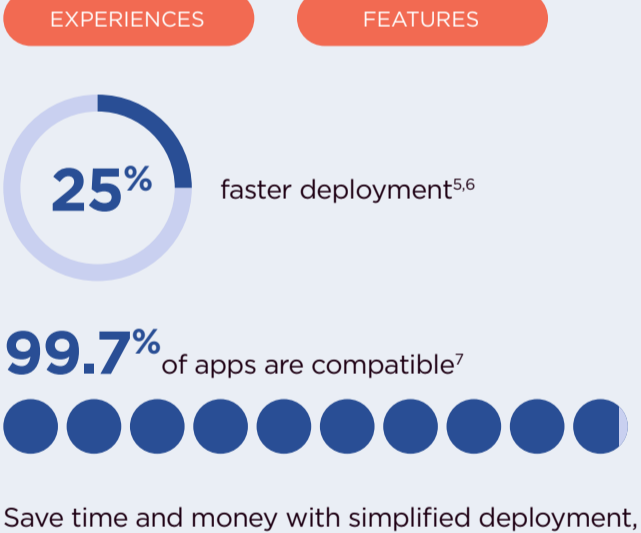


## Security Powerful protection by default



Get layers of protection across the device, OS, apps, identity, and the cloud — with integrated hardware and software, Windows 11 security features automatically turned on by default and Lenovo ThinkShield.

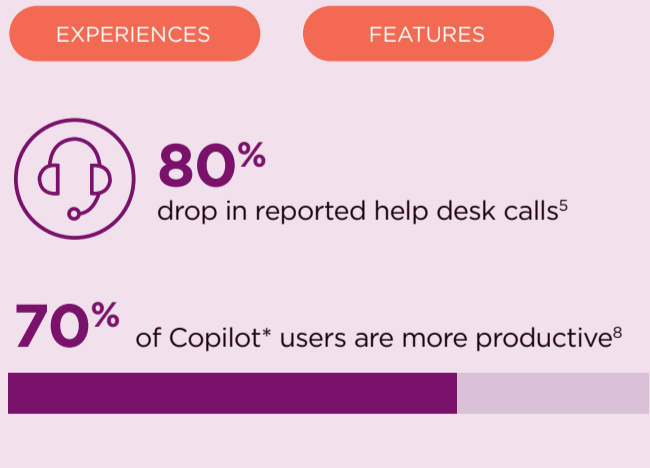
## IT management Streamline implementation and routine tasks



Save time and money with simplified deployment, easier maintenance, and a smooth transition to Windows 11 to support today's hybrid workforce more effectively.



## Future-readiness Unlock your AI advantage



Prepare for an AI-rich future with Copilot in Windows\* and systemwide intelligence for proactive protection, powerful searchability, enhanced help with your carbon footprint.

## Three reasons to get started now:

- ✓ Ensure you are protected, supported, and future-proofed with the latest devices and OS
- ✓ Give yourself time to plan, ensure inventory availability, and manage the transition
- ✓ Eliminate the maintenance and repair costs of aging equipment

Partner with Lenovo to create the best migration strategy for your unique needs and take advantage of TruScale Device as a Service. We're here to help — **with guidance, services, and devices that optimize the power of Windows 11 now and for the future.**



**Contact your Connection Account Team for more information.**

Business Solutions 1.800.800.0014      Enterprise Solutions 1.800.369.1047      Public Sector Solutions 1.800.800.0019  
[www.connection.com/Lenovo](http://www.connection.com/Lenovo)

**References**  
 1 IDC, "The Refresh Imperative: The Value of Deploying New, More Secure, Generative AI-Centric PCs Ahead of the Windows 10 End of Service," 2023  
 2 Compared to Windows 10 devices. Principled Technologies, "Improve your day-to-day experience with Windows 11 Pro laptops," February 2023  
 3 Battery life varies based on settings, usage, device and other factors.  
 4 Windows 11 results are in comparison with Windows 10 devices. Techsle, "Windows 11 Survey Report," February 2022  
 5 Commissioned study delivered by Forrester Consulting "The Total Economic Impact" of Windows 11 Pro Devices," December 2022.  
 Note: quantified benefits reflect results over three years combined into a single composite organization that generates \$1 billion in annual revenue, has 2,000 employees, refreshes hardware on a four-year cycle, and migrates the entirety of its workforce to Windows 11 devices.  
 6 Microsoft Intune and Azure Active Directory required; sold separately  
 7 App Assure program data  
 8 Work Trend Index Special Report "What can Copilot's earliest users teach us about generative AI at work?," November 2023



Lenovo recommends Windows 11 Pro for Business.

**Smarter technology for all**