



HPE VM Essentials Software and hybrid cloud operations powered by Morpheus

Break free from vendor lock-in with KVM-based virtualization and enable a unified approach to VMware, Kubernetes, AWS, Azure, and more

HPE VM Essentials Software is a unified solution that enables customers to simplify their VMware® deployments and replatform workloads to kernel-based virtual machine (KVM) to reduce cost, complexity, and lock-in.

A unified approach to virtualization powered by Morpheus

Morpheus Data, recently acquired by Hewlett Packard Enterprise has been an award-winning leader in private and hybrid cloud orchestration for several years, turning both VMware and KVM-based deployments into private clouds for hundreds of customers and millions of application workloads. Now, their technology is powering the new HPE VM Essentials Software.

HPE VM Essentials is a new virtualization software solution that allows customers to provision and manage KVM and VMware-based VMs from a single intuitive interface.

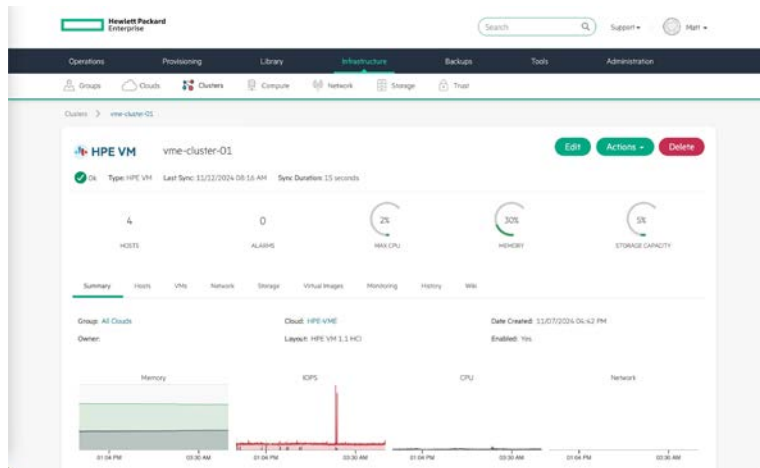


Figure 1. HPE VM Essentials Software

Offerings incorporating HPE VM Essentials Software

- **Stand-alone software:** Flexibility to deploy on existing or new hardware not bundled into a private cloud solution. Available December 2024 with support for HPE ProLiant Gen11 Server, HPE Alletra Storage MP. More options including support for third-party hardware to follow.
- **HPE GreenLake for Private Cloud Business Edition:** A fully integrated, self-managed private cloud built on the HPE Alletra dHCI platform with automated setup and simplified lifecycle management through HPE GreenLake cloud. Coming early 2025.
- **HPE GreenLake for Private Cloud Enterprise:** A scalable, pay-per-use*, enterprise-grade solution delivered as a fully managed service. Built for both cloud-native and traditional applications, it supports the self-service provisioning of bare metal, virtual machines (VMs), and container services. Available in 2025.

The solution comes with the KVM-based HPE VME hypervisor that is enhanced to include enterprise-grade cluster management with capabilities such as high availability, live migration, distributed workload placement, integrated data protection, secure hardening, and external storage support.

To enable flexibility for those continuing to host VMware-based applications, HPE VM Essentials can also be used to connect and manage existing VMware clusters. This means unified management and simple VM provisioning across both HPE VME hypervisor and VMware ESXi™ so you can provision workloads on demand to the right environment, on your terms, with zero lock-in. When you're ready, you can use the included toolset to convert existing VMware images to HPE VM Essentials Software.

HPE VM Essentials is available as stand-alone software and is planned to be available soon as an embedded part of HPE private cloud offerings starting with HPE GreenLake for Private Cloud Business Edition and later in HPE GreenLake for Private Cloud Enterprise.

* May be subject to minimums or reserve capacity may apply

“HPE VM Essentials provides a real alternative to the status quo. With support for my existing hypervisor and a flexible path for future workloads, we can modernize our business for operational and resource efficiency.”

– Chris Macken, Vice President—IT Operations and Security, Cambrian Credit Union

Upgrade your cloud operating model with the full Morpheus suite

Today’s enterprise platform teams have requirements that go beyond virtualization; they also need to enable developer agility as they modernize applications to take advantage of containers and cloud-native services, including those available from public cloud providers.

With Morpheus as the unified orchestrator and control plane for the HPE private cloud portfolio (HPE GreenLake for Private Cloud Enterprise, HPE GreenLake for Private Cloud Business Edition, and HPE Private Cloud AI), you can easily start with HPE VME and then upgrade to the full Morpheus software platform. This adds support for additional hypervisor options, Kubernetes clusters, and public cloud workloads, as well as robust private and hybrid capabilities including:

- **Self-service application provisioning:** Developers, data analysts, and other users can provision services or stacks through application programming interface (API) / CLI, GUI catalog, or IT service management (ITSM) plug-in
- **Fine-grained role-based access control:** Govern users with permissions and policies to create a secure and budget-friendly paved-road without losing agility
- **Advanced lifecycle and Day 2 automation:** Implement virtually any scripted task in app lifecycle phases plus build operational workflows and jobs to streamline everyday IT
- **Cloud cost management and optimization:** Discover existing instances, optimize resource use, centralize multicloud usage reporting, and enable showback/chargeback



The challenge is real

99%

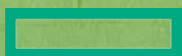
of survey respondents express concern about the impact of Broadcom’s acquisition of VMware on their business.¹

32%

of people are considering leaving VMware.²

¹ [“High Levels of Customer Unease Around VMware-Broadcom Deal: Report,” Redmond Channel Partner, June 2024](#)

² [“VMware Under Broadcom: Challenges, customer impacts and choices,” Itaa, June 2024](#)



HPE VM Essentials Software

Optimizing cost of virtualized infrastructure

HPE VM Essentials includes the HPE VME KVM-based hypervisor but also supports your existing VMware licenses, providing ease of use, agility, and a unified VM-vending experience for HPE VME and VMware clusters. The KVM stack is ideal for those exploring alternatives to VMware, starting with non-mission-critical workloads such as test and development.

Over the course of 2025, HPE plans to ramp performance testing and solution engineering to provide specific recommendations and reference architectures for common workloads and an expanded set of target use cases.

Morpheus is well known for its integration into dozens of third-party technologies. HPE VM Essentials leverages that same pluggable abstraction framework to enable partner ecosystem integration, such as with backup providers Cohesity, Commvault, and Veeam.

At launch, HPE VM Essentials is offered under a term-based subscription license and shall be priced competitively on a per-CPU socket basis, with no extra charge for connecting existing VMware clusters. Contact your local sales team for pricing details on HPE VM Essentials, HPE GreenLake for Private Cloud Business Edition, or the full Morpheus suite as an add-on or superset of HPE VME functionality.

Limited-time introductory offer for HPE GreenLake for Private Cloud Business Edition customers

The first 100 customers who purchase HPE GreenLake for Private Cloud Business Edition with HPE Alletra MP or HPE SimpliVity before January 31, 2025, is eligible for a complimentary three-year HPE VM Essentials subscription for each HPE GreenLake for Private Cloud Business Edition node purchased (up to four nodes) and a 20% discount on HPE migration services to transition to HPE VM Essentials (up to \$10,000 for HPE Alletra MP and up to \$5000 for HPE SimpliVity).



Contact your Connection Account Team for more information.

Business Solutions	Enterprise Solutions	Public Sector Solutions
1.800.800.0014	1.800.369.1047	1.800.800.0019

www.connection.com/hpe

© Copyright 2024 Hewlett Packard Enterprise Development LP. The information contained herein is subject to change without notice. The only warranties for Hewlett Packard Enterprise products and services are set forth in the express warranty statements accompanying such products and services. Nothing herein should be construed as constituting an additional warranty. Hewlett Packard Enterprise shall not be liable for technical or editorial errors or omissions contained herein.

Azure is either a registered trademark or trademark of Microsoft Corporation in the United States and/or other countries. VMware ESXi and VMware are registered trademarks or trademarks of VMware, Inc. and its subsidiaries in the United States and other jurisdictions. All third-party marks are property of their respective owners. All third-party marks are property of their respective owners.

a00144027ENW

2892571-1224