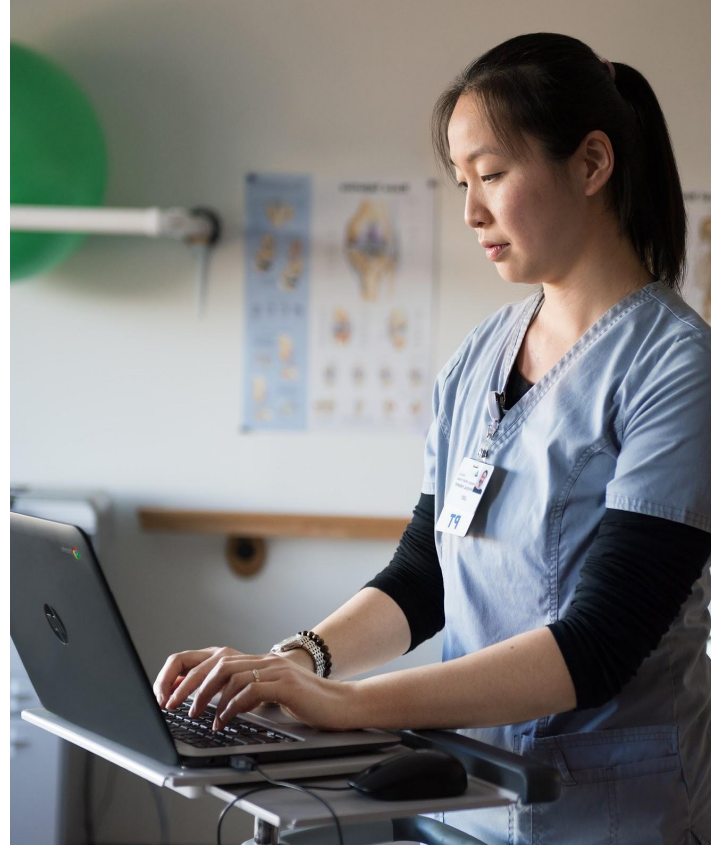




Modernize healthcare delivery with ChromeOS

Get fast access to patient information and provide modern care in the moment with secure experiences for clinicians, patients, and healthcare organizations.



ChromeOS delivers modern clinician experiences

No matter your end user or use case, ChromeOS offers unmatched security, ease of use, and manageability.



Mobile healthcare

Free your practitioners from fixed workstations with mobile access to the information they need, even when their device is offline, as apps persist even when not connected to Wi-Fi.



Virtual care and telehealth

Support and connect with your patients remotely, monitor health digitally, and set up virtual visits.



Shared workstations

Provide read access to electronic healthcare systems (EHRs) via Citrix and VMware VDI. Simplify sign on and sign off to shared devices with identity management solutions like Imprivata.



Digital training and communication

Empower caregivers to access training and resources with shared and temporary ChromeOS devices.

Streamline and simplify your deployment with ChromeOS device management

1

Configure policies, deploy apps, and update content remotely.

2

Enroll devices to sync policies, apps, and content automatically.

3

Remotely manage and monitor your devices.

Plug right in, right now.



Deploy new devices pre-loaded with ChromeOS.



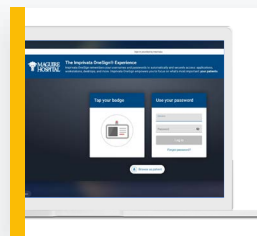
Install [ChromeOS Flex](#) on devices you already own.

Integrate with your current cloud-based solutions.

Use your preferred EHR solutions through the familiar and intuitive Chrome browser or Chrome apps, all easily managed within the Google Admin console. Google has validated the following solutions using Chrome Enterprise Recommended guidelines.

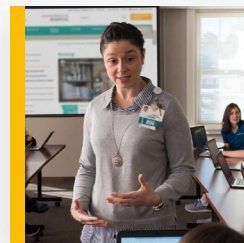
Learn more about [Chrome Enterprise Recommended](#) solutions designed to streamline workflows for clinicians and improve patient care.

Support for every use case



Shared clinical workstation

Fast user switching with Imprivata
Access to EHR
Peripheral compatibility (barcode and dictation)



Long-term care

Access to cloud-based EHR
Secure log in
Wayfinding
Resident check-in kiosk



Digital signage

Nursing station Check-in devices
Menus Wayfinding



Interactive kiosk

Appointment check-in Patient payments
Time reporting Equipment access



Contact a Connection Account Manager for more information.